

Construction Update

Mt. Werner Circle / Après Ski Way Roundabout

**August—September
2008**

Roundabout to Open End of August

Work continues on schedule for completion of the Après Ski Way—Mt. Werner Circle Roundabout. The roundabout is expected to be open and functional during the last week in August.

Some work will continue after the roundabout opens. During this work, only minor delays can be expected with the roundabout operating in its final configuration.

All work is expected to be complete by mid-September.



Mt. Werner Circle Traffic Control

Through mid-August, Mt. Werner Circle will remain one-way northbound between Eagle Ridge Road and Ski Time Square Drive. Après Ski Way will remain open between Mt. Werner Circle and Village Drive, however, left turns from Après Ski Way onto Mt. Werner Circle will not be permitted.

Final paving is scheduled for August 19-22, weather permitting. On August 19 and 20th, the southbound lane of Mt. Werner Circle will be paved with 2 layers of asphalt. Traffic will remain its one-way flow on Mt. Werner Circle and Après Ski

Way will be open to traffic.

On August 21 and 22, the final layer of asphalt will be placed on Après Ski Way and the northbound lane of Mt. Werner Circle. For these two days, Après Ski Way between Mt. Werner Circle and Village Drive will be closed.

During the following week, striping of the roadways will occur, and once completed, traffic will be in its final roundabout configuration.

Work in the area will continue until mid-September. Topsoil,

seeding, and pedestrian lighting will be installed, as well as final cleanup of the area. This work will only require minor traffic control with the roundabout fully functional. Some delays may be experienced mostly just to move construction equipment through the project area.

For the latest details on the construction, join us each Friday morning at 8:30 at the Snow Flower. Our construction team will be available to discuss the details of the construction, vehicle and pedestrian routes, and our weekly schedule of work.

SSRA

Funding for the project is made possible through the Steamboat Springs Redevelopment Authority (SSRA), an urban renewal authority, established in 2005. A portion of the incremental tax proceeds from new development within the SSRA boundary provides the basis for acquiring bonds that will finance the improvements. The first bond was issued in April 2007 and we expect the next bond in the fall of 2008.

SSRA briefings and public open house events are held the second Tuesday of each month in Centennial Hall. SSRA Meetings start at 4 PM.

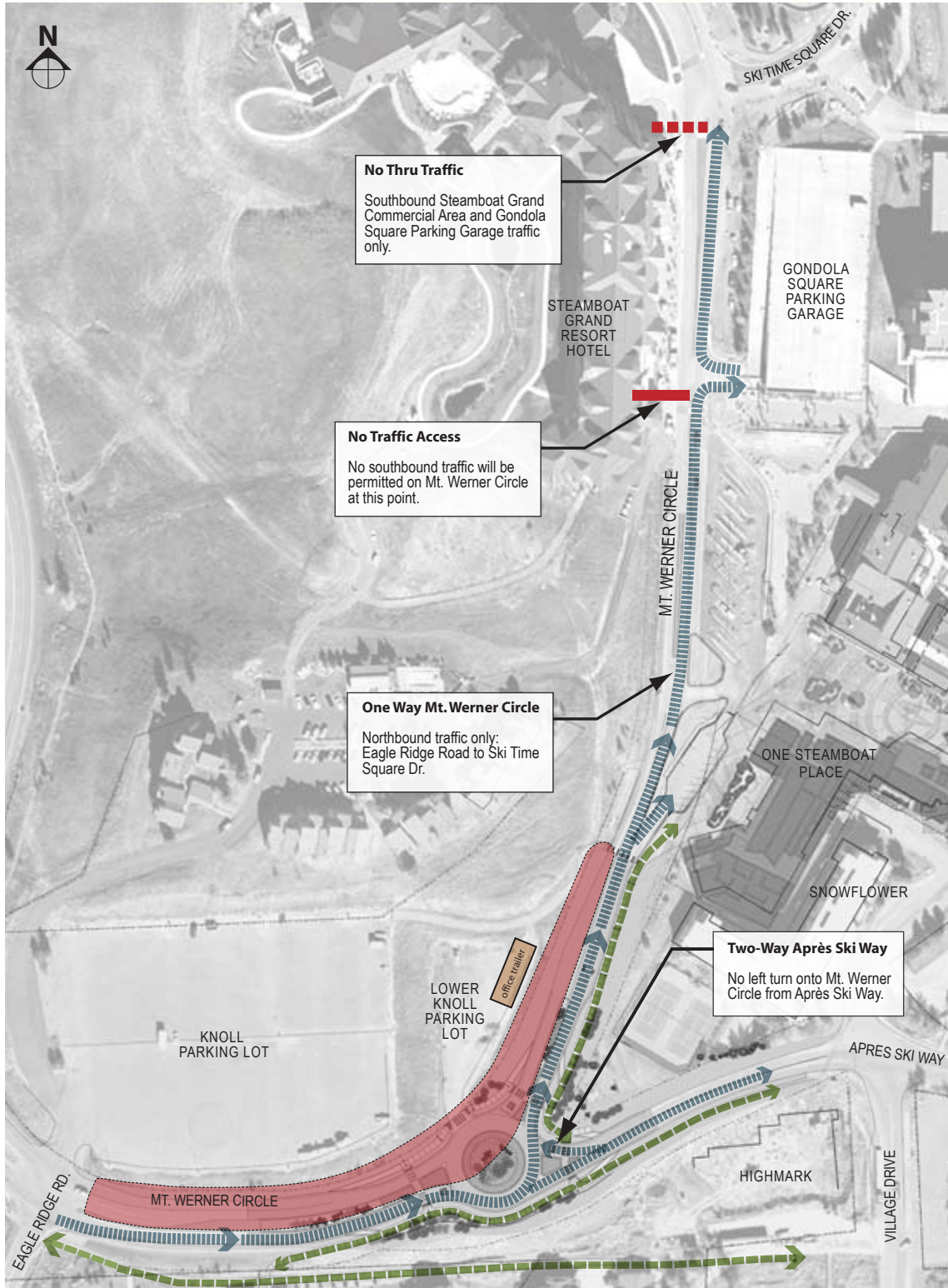
The advisory committee (URAAC) to the SSRA meets every 2nd and 4th Fridays of the month in Centennial Hall from 1 to 3 PM.



**Steamboat
UNBRIDLED**

SUMMER 2008 CONSTRUCTION CIRCULATION

PHASE FOUR A 8/4/08 - 8/26/08



PEDESTRIAN CIRCULATION



Pedestrians will be directed around construction zones on fenced pathways to provide access to businesses and residences.

VEHICULAR CIRCULATION



Vehicles will be directed around construction zones via temporary detours. Short delays may be experienced. **Emergency access will be provided 24/7.**

CONSTRUCTION ZONE



Areas restricted to construction personnel with appropriate safety and protective gear. Traffic will be flagged through Construction Zone during work hours.



CONSTRUCTION INFORMATION

ACCESS TO BUSINESSES AND RESIDENCES WILL BE PROVIDED AT ALL TIMES.

Work Schedule (AUGUST)

- Monday through Friday 7 AM to 7 PM
- Saturday 8 AM to 4 PM as necessary

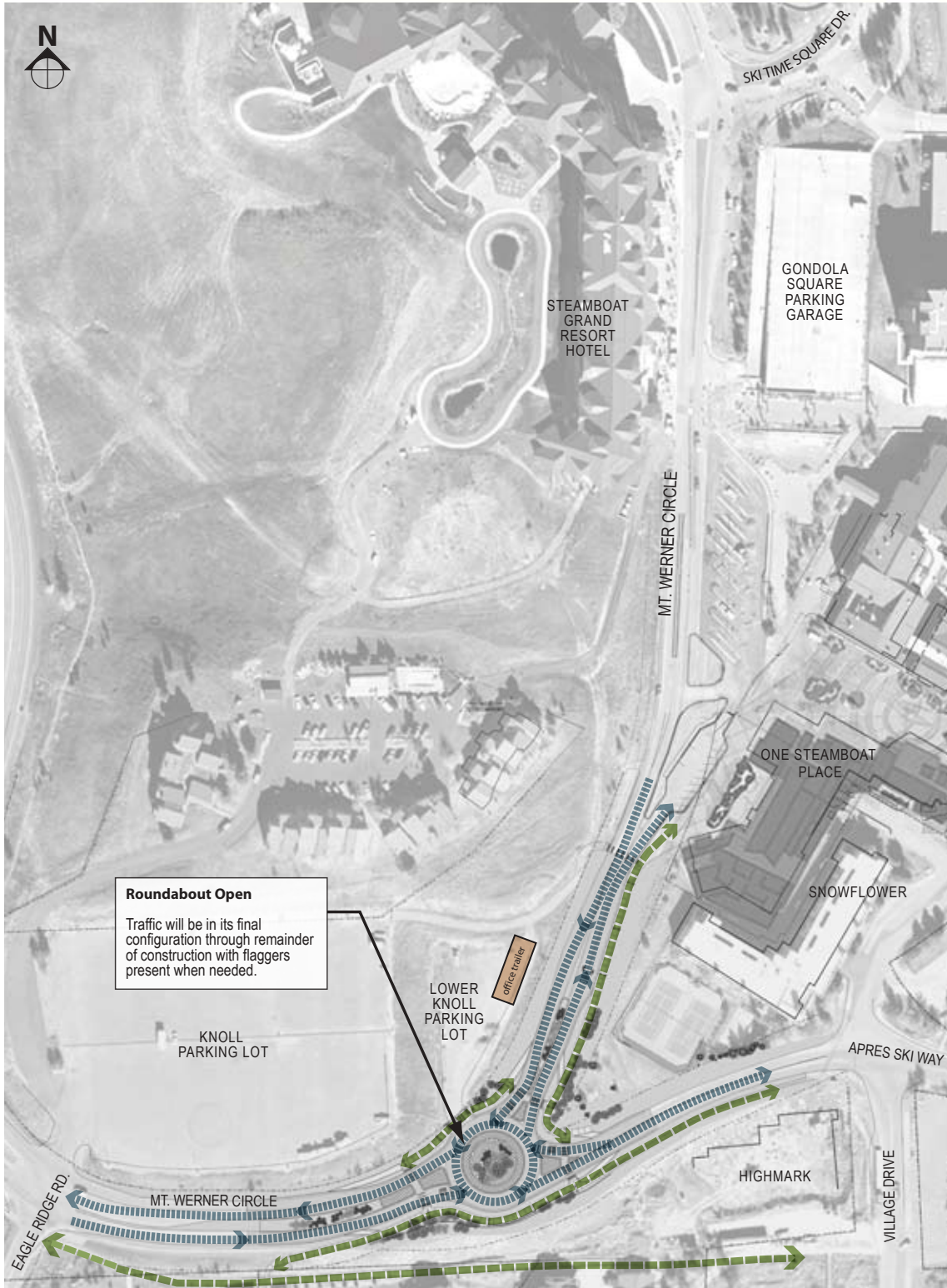
THE WEEKLY SCHEDULES FOR CONSTRUCTION WILL BE PRESENTED BY THE CONTRACTOR FOR DISCUSSION EACH FRIDAY AT 8:30 AM IN THE SNOWFLOWER. BUSINESSES AND RESIDENTS ARE ENCOURAGED TO ATTEND TO DISCUSS THE SCHEDULE AND GET INFORMATION ON THE CONSTRUCTION.

For information see our website at www.Steamboatsprings.net/unbridled or call Joe Kracum at 970 871-7077

AUGUST 4, 2008

SUMMER 2008 CONSTRUCTION CIRCULATION

PHASE FOUR B 8/27/08 - 9/15/08



PEDESTRIAN CIRCULATION



Pedestrians will be directed around construction zones on fenced pathways to provide access to businesses and residences.

VEHICULAR CIRCULATION



Vehicles will be directed around construction zones via temporary detours. Short delays may be experienced. **Emergency access will be provided 24/7.**

CONSTRUCTION ZONE



Areas restricted to construction personnel with appropriate safety and protective gear. Traffic will be flagged through Construction Zone during work hours.



CONSTRUCTION INFORMATION

ACCESS TO BUSINESSES AND RESIDENCES WILL BE PROVIDED AT ALL TIMES.

Work Schedule (AUGUST - SEPTEMBER)

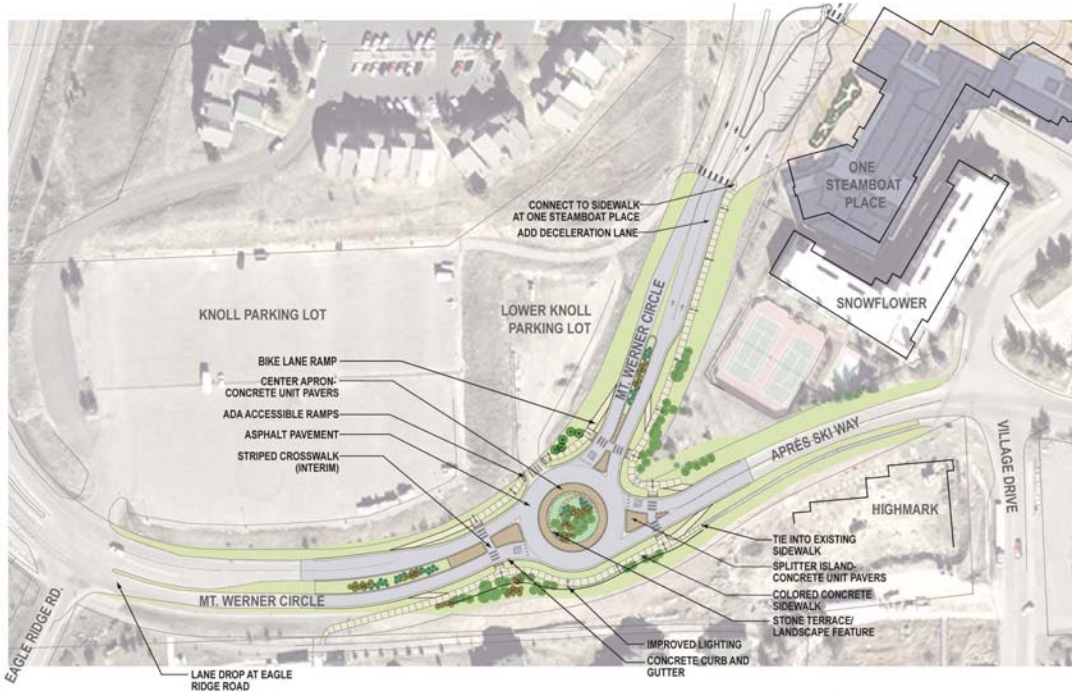
- Monday through Friday 7 AM to 7 PM
- Saturday 8 AM to 4 PM as necessary
- No Work Labor Day; Friday 7 PM to Tuesday 7 AM

THE WEEKLY SCHEDULES FOR CONSTRUCTION WILL BE PRESENTED BY THE CONTRACTOR FOR DISCUSSION EACH FRIDAY AT 8:30 AM IN THE SNOWFLOWER. BUSINESSES AND RESIDENTS ARE ENCOURAGED TO ATTEND TO DISCUSS THE SCHEDULE AND GET INFORMATION ON THE CONSTRUCTION.

For information see our website at www.Steamboatsprings.net/unbridled or call Joe Kracum at 970 871-7077

AUGUST 4, 2008

Mt. Werner Circle / Après Ski Way Roundabout



- **Slow Down**
- **Watch for Pedestrians and Bicyclists**
- **Yield to Traffic in Roundabout**
- **Use your Right Turn Signal before exiting**
- **Watch for Pedestrians and Bicyclists**
- **If you miss your exit, go around Roundabout again**

Negotiating the New Roundabout

Entering Roundabout

As you approach the entry to the roundabout, there will be a "Yield" sign at the roundabout intersection.

Slow down, watch for pedestrians and bicyclists and be prepared to stop if necessary.

When you enter, yield to circulating traffic from the left, but do not stop if it is clear.

Traffic in the roundabout has the right of way.

Exiting Roundabout

The roundabout will have "One Way" signs mounted in the center island.

Upon passing the street prior to your exit, turn on your right turn signal and watch for pedestrians and bicyclists as you exit.

Yield to pedestrians in crosswalks.

Left turns are completed by traveling around the center island.

Trucks

The roundabout has been designed to accommodate many large trucks. A 3-inch raised apron in the center allows large trucks to make turning movements.

Trucks may drive on the raised pavement of the truck apron to navigate the roundabout.

Yield rules apply to trucks the same as with cars.

The truck apron should not be used by passenger cars.

Pedestrians

Use sidewalks and crosswalks. Jaywalking through the center of the roundabout is prohibited.

Bicyclists

Experienced bicyclists may use the roundabout similar to vehicles with the same rules. Cyclists uncomfortable using the roundabout should use the ramps at the entrances of the roundabout to transition to the sidewalks. Slow speeds or dismount are advised on sidewalks.